



DIN 261 T Bolts

Leader-Fastener is a manufacturer and distributor of **DIN 261 T Bolts**. We have a complete line of service from having invested in production plants, export department and to having a quality control team and center to meet your requirements. We regard quality as the life of the company. We persist in good quality as the first policy and have established a set of quality control and inspection system according to the international standard. We have carried out ISO9001 Quality Guarantee System in every course of production, transportation and selling. We do hope we could be your partner in business by topping quality, knight

service and competitive price in the near future and be your friends as well.

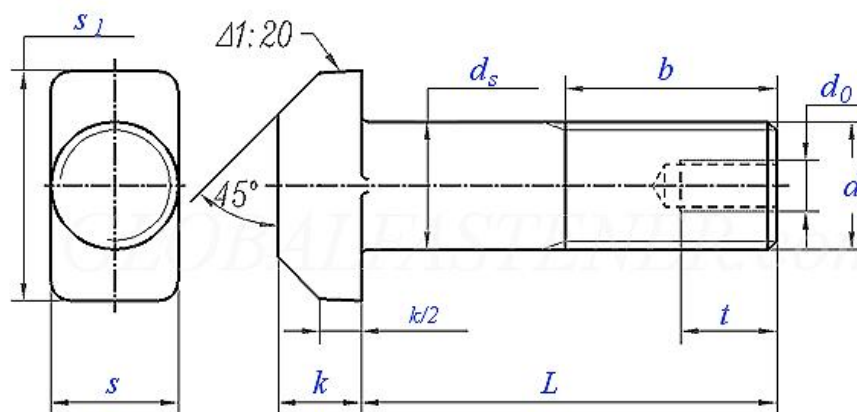
DIN 261 Hammerhead Tee-Head Bolts with Round Neck

T-Head Bolts, also known as Hammer Head Bolts, T-Slot Bolts and Tank Strap Bolts, have either a Tee or square shaped head. Normally they are installed into a hole with a tee shaped slot so that the head of the bolt can sit flush, and the shape of the bolt resists turning while tightening.

T-slot bolts, as the name suggests, are bolts used in conjunction with T-slots, also known as T-bolts. T-bolts, called hammer bolts in European standards, are made of carbon steel and stainless steel. It can be directly put into the aluminum profile groove, and it can be automatically positioned and locked during the installation process. It is often used in conjunction with the flange nut. It is a standard matching connector when installing corner fittings. It can be customized according to the profile groove width and different series of profiles.

Choose to use. T-bolts are movable anchor bolts and are tools that can be used with nuts. It has extremely important uses. It can not only be used as a connection button for certain pipes, but also plays an important role in the installation and connection of certain instruments, and also has extremely important applications in industry. T-bolts are typically used for nuts that mate with T-slots. General Finish: Zinc-plated or nickel-plated or blackened.

DIN 261 - 2010 T-head bolts with hole



Screw Thread d		M8	M10	M12	M16	M20	M24	M30	M36
P	Pitch	1.25	1.5	1.75	2	2.5	3	3.5	4
b	L≤120	22	26	30	38	46	54	66	78
	120<L≤200	-	-	-	44	52	60	72	84
	L>200	-	-	-	57	65	73	85	97
d ₀		-	-	-	-	-	-	-	M12
d _s	max	8.58	10.58	12.7	16.7	20.84	24.84	30.84	37
	min	7.42	9.42	11.3	15.3	19.16	23.16	29.16	35
k	Nominal Size	5.5	7	8	10.5	13	15	19	23
	max	5.9	7.5	8.75	11.4	13.9	15.9	20	24
	min	5.1	6.5	7.25	9.6	12.1	14.1	18	22
s	max	8.75	10.75	12.9	16.9	21	25	31	37.25
	min	7.25	9.25	11.1	15.1	19	23	29	34.75
s ₁	Nominal Size	18	21	26	30	36	43	54	66
	max	18.9	22	27	31	37.25	44.25	55.5	67.5
	min	17.1	20	25	29	35.75	41.75	52.5	64.5
t	min	-	-	-	-	-	-	-	22
Weight of per 1000 steel products(≈kg)		-	-	-	-	-	-	-	-
Length of Thread b		-	-	-	-	-	-	-	-

Screw Thread d		M42	M48	M56	M64	M72	M80	M90	M100
P	Pitch	4.5	5	5.5	6	6	6	6	6
b	L≤120	90	-	-	-	-	-	-	-
	120<L≤200	96	108	124	130	-	-	-	-
	L>200	109	121	137	143	169	185	205	225
d ₀		M12	M12	M16	M16	M16	M20	M20	M20
d _s	max	34	38	45	50	55	65	70	80
	min	33	37	44	49	53.8	63.8	68.8	78.8
k	Nominal Size	26	30	35	40	45	50	55	62
	max	27	31	36.25	41.25	46.25	51.25	56.5	63.5
	min	25	29	33.75	38.75	43.75	48.75	53.5	60.5
s	max	43.25	49.25	57.5	65.5	73.5	81.5	91.75	101.75

	min	40.75	46.75	54.5	62.5	70.5	78.5	88.25	98.25
s ₁	Nominal Size	80	88	102	115	128	140	155	170
	max	81.5	89.75	103.75	116.75	130	142	157	172
	min	78.5	86.25	100.25	113.25	126	138	153	168
t	min	22	22	26	26	26	33	33	33
Weight of per 1000 steel products(≈kg)		-	-	-	-	-	-	-	-
Length of Thread b		-	-	-	-	-	-	-	-